

Aesthetic Precision Dental Implant Ball Attachment Partial Dentures

Our Product Introduction

for more products please visit us on adschinadentallab.com

Basic Information

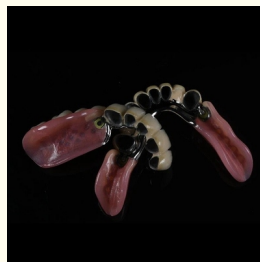
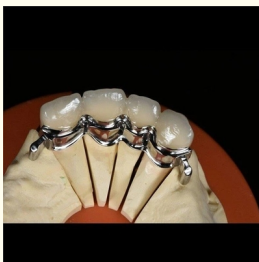


Product Specification

- Highlight: Aesthetic dental implant ball attachments, Precision dental implant ball attachments, Aesthetic precision attachment dental



More Images



Product Description

As a manufacturer of Precision Attachment Partial Dentures, our products are made with precision and quality in mind. Our

dentures are designed to provide a comfortable, secure, and functional solution for patients who want to regain their confidence in their smile.

One of the key advantages of our dentures is the precision attachment system that we use. This system ensures that our dentures are securely attached to the patient's existing teeth, providing a level of stability and comfort that is simply not possible with other types of dentures.

Another advantage of our dentures is their aesthetic appeal. Our dentures are made with the latest technology, which means that they look and feel just like natural teeth. This means that patients who wear our dentures can enjoy a natural-looking smile that is sure to boost their confidence and self-esteem.

In addition to their aesthetic appeal, our dentures are also easy to clean and maintain. Our products are made with high-quality materials that are designed to last for years, allowing patients to enjoy a beautiful smile without having to worry about constant maintenance or upkeep.

Our Precision Attachment Partial Dentures are also versatile, and can be customized to meet the unique needs of each individual patient. Whether a patient needs a partial denture or a complete set of dentures, we can provide a solution that is tailored to their specific requirements.

Finally, our products are made with safety in mind. We use high-quality materials that are free from harmful chemicals and toxins, ensuring that our products are safe and reliable for use by patients of all ages.

In summary, if you are looking for a high-quality, versatile, and safe solution for your patients who require partial dentures, our Precision Attachment Partial Dentures are the perfect choice. With their precision attachment system, aesthetic appeal, and ease of use and maintenance, our dentures are sure to provide your patients with a smile that they can be proud of. So why wait? Contact us today to learn more about how our dentures can benefit your patients and your business!

Production Introduction:

A Precision Attachment Case uses precision attachments to connect a partial denture to fixed bridgework. Precision attachment partial dentures can be used to restore arches where there are not enough teeth for fixed bridgework.

A precision attachment is a precision-machined male and female (key and lock) housing that connects a removable partial denture to fixed bridgework.

The female part of the attachment is soldered to fixed crowns or bridgework the male part is attached to the partial denture.

The male is machined by the manufacturer to fit the female with such precision that any male out of the box will fit any female with an exact degree of accuracy. All of the precision attachments in a partial denture are positioned so that they are exactly parallel to each other.

Product Parameter

Customized

Product Feature And Application

Precision Attachments are special attachments used for the perfect fit of removable partial dentures. The attachment prosthesis consists a combination of permanently fixed and removable denture. It is a passive retention mechanism by which the abutment teeth are not exposed to excessive forces.

Removable partial dentures with precision attachments are used for treating terminally involved dental arches (free end saddle). It uses a double tilt retention mechanism thus preventing gravitational and muscular forces from dislodging the partial denture during function. The use of double tilting path of insertion eliminates the torquing stresses that the most abutments are forced to absorb from conventional retentive mechanisms.

Benefits

- Space saving hind of dentures
- Economic alternative to Implants
- No metal clasp
- Semi fixed
- Perfect fit
- The double tilt retention mechanism prevent gravitational and muscular forces from dislodging the partial denture during function.

Deliver,Shipping And Serving

We accept STL files.

We accept normal impressions, you can send us by Fedex,UPS,DHL or Linex

We finish the jobs in 4-5 days once we receive your cases

We accept TT.Paypal